



November 2003

Web address: www.sgs-neworleans.org

reflections

November Luncheon

Thursday
November 13, 2003
11:15 AM – 1:00 PM

The Fairmont
The Blue Room
123 Baronne Street

Menu

Roasted Corn Chowder
Roasted Pork Loin with
Calvados Sauce
Pumpkin Cheesecake

\$22.00 pp (member)
\$27.00 pp (non-member)

This Month's Sponsor
Shell Expl & Prod Co.

RSVP

Lisa Buckner
(504) 728-6801 or
lisa.buckner@shell.com
by November 10th a.m.

Inside This Issue

President's Corner.....	2
Vice-President's Corner.....	2
Calendar of Events.....	5
T-Shirt Order Form.....	10
Joint Energy Luncheon.....	12
Membership Application.....	13

Deepwater – the Third Wave

Bill Leffler, Rich Pattarozzi, and Gordon Sterling
*authors of DEEPWATER EXPLORATION AND PRODUCTION –
A NONTECHNICAL GUIDE and former Shell executives*

Petroleum exploration and production is now in a third wave of technological advance. For the first, the Onshore Wave, the continuous improvement since the first well in Pennsylvania in 1859 mostly played out in the 1970s.

The second, the Offshore Wave, started a hundred years ago and bent over at the edge of the Continental Shelf in the late 1970s, and that brought crisis to the industry.

At that point, innovative thinking and paradigm busting brought us to Deepwater – the Third Wave. Its pace of technological change continues unabated.

Biographies:

Bill Leffler received his BS from M.I.T. and MBA and PH.D. Following a career with Royal Dutch/Shell in the upstream, downstream and petrochemical businesses, he became a writer and consultant. He is the author of four other books, including *Petroleum Refining in Nontechnical Language* and *Petrochemicals in Nontechnical Language*.

Rich Pattarozzi received his BS in Civil Engineering from the University of Illinois. He worked for Shell in both the onshore and offshore E&P for 35 years. During his past nine, he directed the pioneering deepwater activities in the Gulf of Mexico. In 2000 Offshore Energy Center gave him its Pinnacle Award, recognizing his significant individual contributions to the offshore oil and gas industry.

Gordon Sterling has a Bachelor of Applied Science from the University of Waterloo, Ontario and a MS – Civil Engineering from Lehigh University. During his 35 years with Shell, he engaged in numerous offshore developments, first in structural design and marine research and then in project and program management. For eight years he represented the American Society of Civil Engineers on the Board of Directors of the Offshore Technology Conference and was chairman of the OTC Board in 1998 and 1999.

President's Corner

Welcome to our third meeting, planned for Nov 13th in the Fairmont Blue Room. Our presenters, Bill Leffler, Rich Pattarozzi, and Gordon Sterling, former Shell executives, will be speaking on "Deepwater – the Third Wave". They will be describing the history of exploration and production in the Gulf of Mexico, culminating in the rapid technological advances of deepwater exploration and development efforts. This should be a very good talk, and we look forward to seeing you at the luncheon.

On November 11th, the Joint Energy Association will be hosting their Annual Luncheon at the Fairmont Hotel. The speaker will be Vince Cottone, Chairman Gulf Safety Committee, ChevronTexaco, and will be discussing "Maritime Safety Issues". President Bush signed into law the Maritime Transportation Security Act of 2002. It requires development of regulations for security assessments, security plans, and specific security measures for ports, vessels, and facilities in U.S. waters. Mr. Cottone will be discussing these impending requirements. The Coast Guard plans to issue Final Rule for the Maritime Transportation Security Act in November 2003.

We also have a new Editor, Ellen Clark with ChevronTexaco. Tom Van Wagoner, our current Editor, is transferring to Lafayette with ChevronTexaco. Tom has done a terrific job as Editor, very effectively publishing the newsletter and collecting advertising revenues. Please thank Tom for the excellent job he has done and welcome our new Editor, Ellen Clark. She will be a great addition to the SGS Executive Board.

Thank you very much to the sponsors of the Fall Social. We very much appreciate your generosity. Hope to see you at the luncheon.

Bob Shank

2nd Vice President's Corner

October was a very busy month with our luncheon, Annual Fall Social at the House of Blues, GCAGS convention in Baton Rouge and the SEG convention in Dallas. I hope that those of you who attended the SEG Convention had a great experience.

I want to thank everyone for another successful luncheon. There wasn't an empty seat in the room with 98 people attending. Malcolm Lansley's presentation, "High Density 3D", was very interesting. The strides that are being made in data acquisition to increase quality and yet keep it affordable are amazing. This technology should be beneficial both onshore and in transition zone areas. If you were interested, I hope you picked up one of the brochures or had a chance to speak with Brent Propst about this new technology. Thank you, Malcolm and Brent, for your presentations and to PGS Onshore, Inc. for sponsoring the luncheon.

I hope everyone enjoyed another great Fall Social in the Voodoo Garden of the House of Blues. The food & drink are always good and it's a great opportunity to network with colleagues and friends you may not get a chance to speak with very often, whether they work for another company or down the hall from your office. Thank you to our Fall Social Sponsors: Baker Hughes, Schlumberger, WesternGeco, Seismic Exchange Inc., Geophysical Pursuit Inc. and CGG.

The 4th Annual Greater New Orleans Joint Energy Industry Association Luncheon will be held at the Fairmont Hotel on Tuesday, November 11th, beginning at 11:00am. The Guest Speaker, Vince F. Cottone, Chairman – Gulf Safety Committee, ChevronTexaco, will present "Maritime Safety Issues". Registration is \$25 per person in advance or \$30 at the door. Contact Richard Tucker with any questions and to register, (504)

858-7872 or tuckquin@bellsouth.net. Visit www.api-delta.org for details.

Our SGS November luncheon will be held Thursday, November 13th. The luncheon speakers will be Bill Leffler, Rich Pattarozzi and Gordon Sterling, former Shell executives and authors of "Deepwater Exploration and Production – A Nontechnical Guide". Their talk is entitled " Deepwater – the Third Wave". Please RSVP by Noon Tuesday, November 11th.

We thank you for your continued support and look forward to seeing you at our November Luncheon.

Lisa Buckner

Southeastern Geophysical Auxiliary News

On Thursday, September 18, 2003 SGA held our Le Petit Déjeuner at the home of Joyce Delerno. It was our membership coffee and meeting and was enjoyed by all who attended.

New members, Eileen Boylston, Lucretia Bryant, Nancy Somerlader and Marian Turner, welcome, we are glad to have you aboard.

October brings us to lunch at the Pontchartrain Hotel and tour at WDSUTV.

December brings us to Rosemary and Ed Austin's home for our Christmas wine party. This date is Friday, December 12.

Anyone who would like to join SGA will have a wonderful time, we are as nice as you would have as new friends, you could find. Please call Rosemary (737-9697) or Claire (835-2888) to join. Hope to see you there.

Rosemary Austin



Committee for September Coffee



John Jurasin presents Catherine Thibault a check for SGS's endorsement of the Gulf Coast Energy Marketplace

The logo for TGS-NOPEC Geophysical Company features the company name in a bold, sans-serif font. The 'O' in 'NOPEC' is replaced by a stylized globe with white latitude and longitude lines. Below the name, the words 'G E O P H Y S I C A L C O M P A N Y' are written in a smaller, spaced-out font. A large, stylized white arrow curves from the bottom left towards the top right, passing behind the globe. The background consists of a textured, wavy pattern in shades of gray.

TGS-NOPEC
G E O P H Y S I C A L C O M P A N Y
Exploring a world of opportunities

2500 CityWest Blvd. Suite 2000 Houston, Texas 77042-3018 Phone: (713) 860-2100 Fax: (713) 334-3308 www.tgsgeo.com

						1
2	3	4	5	6	7	8
9 Int'l Congress on Geos	10	11	12	13 SGS Luncheon	14	15
16	17	18	19	20	21	22
23	24	25	26	27	28	29
30						
S	M	T	W	T	F	S

November

November 9-12
**Int'l Congress on
Geosciences in the
Petroleum Industry**
Cancun, Mexico

November 13
SGS Luncheon

	1	2	3	4	5	6
7	8 AGU Fall Meeting	9	10	11 SGS Luncheon	12	13
14	15	16	17	18	19	20
21	22	23	24	25	26	27
28	29	30	31			
S	M	T	W	T	F	S

December

December 8-12
AGU Fall Meeting
San Francisco, CA

December 11
SGS Luncheon

The school year has begun and the

**SGS Outreach Committee
NEEDS YOUR IDEAS
to develop
CLASSROOM PRESENTATIONS**

To submit ideas and/or join the committee
CONTACT

LISA BUCKNER

(504) 728-6801

lisa.buckner@shell.com



**Dominion Exploration
& Production, Inc.**



OFFSHORE BUSINESS UNIT

(Including South Louisiana)
1450 Poydras Street
New Orleans, LA 70112-6000
Tel: 504-593-7000
Fax: 504-593-7665



ONSHORE BUSINESS UNIT

Four Greenspoint Plaza
16945 Northchase Drive, Suite 1750
Houston, TX 77060-2133
Tel: 281-873-1500
Fax: 281-873-1530

www.dom.com

John Asma
Vice President
Houston Center Manager



1011 Highway 6 South
Houston, TX 77077
(281) 497-8440 X104
Fax: (281) 497-4619
Mobile: (713) 857-784
e-mail: jasma@geotrace.com
www.geotrace.com



Steve Dennis
Sr. Reservoir Services
Marketing Representative



1011 Highway 6 South
Houston, TX 77077
(281) 497-8440 X129
Fax: (281) 497-4619
Mobile: (713) 724-4560
e-mail: sdennis@geotrace.com
www.geotrace.com





The perfect fit for integrating borehole seismic application design, data acquisition, processing and interpretation



Baker Atlas

How much borehole seismic expertise do you want on your next job?

Baker Atlas and VSFusion, the joint venture between Baker Hughes and CGG, have brought together the highest concentration of borehole seismic experience and expertise in the industry. Baker Atlas' Downhole Seismic Services experienced, dedicated engineers provide the flexibility to meet every objective while offering the largest range of advanced borehole seismic equipment and services available in the industry today. VSFusion represents the largest dedicated borehole seismic research development group with the ability to provide a full range of borehole seismic processing services on a global basis. For operators with exploration, appraisal and development needs, let Baker Atlas and VSFusion improve your reservoir model accuracy.

www.bakeratlas.com | www.vsfusion.com

1515 Poydras Street, Suite 2400 | New Orleans, LA 70112 | 504.561.7900

©2008 Baker Hughes Incorporated. All rights reserved. ATL-08-5021

Take it from folks who are finding oil and gas.

"The best AVO products available bar none.....
a real gold mine".

President of an Independent Oil Company

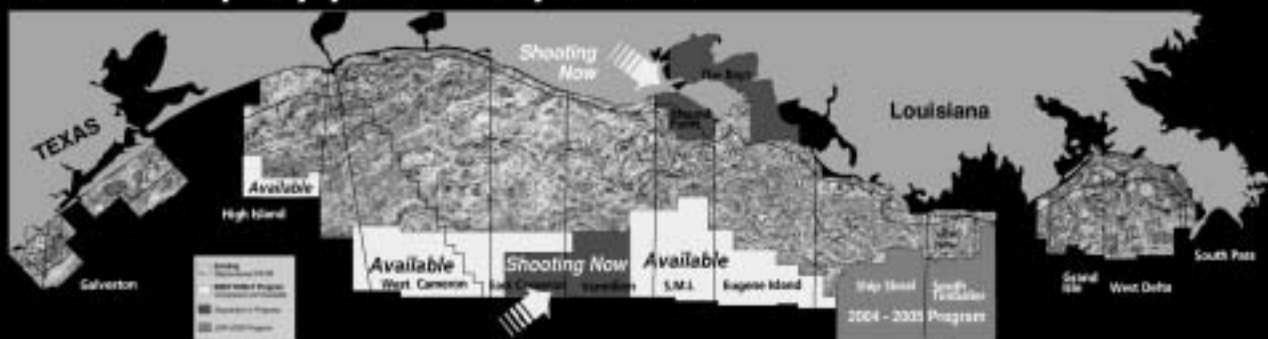
"Our company has 3D seismic data covering the entire GOM Continental Shelf, and we have had **more discoveries on Fairfield's dataset** than the others combined".

President of an Independent Oil and Gas Company

"With Fairfield's regional 3D, significant reserves continue to be found on the Shelf. **Fairfield did it right**".

Sr. Geophysicist of a large Independent Oil Company

**Seismic data you can depend on
from a company you can depend on.**



Houston 281/275-7500
New Orleans 504/525-6400
www.fairfield.com

**Proud to be
an American
company**

SEI®

Seismic Exchange, Inc.

**Strategic Speculative Surveys
Geophysical Data Marketing & Management**

YOUR
Full Service
National
Seismic Data
Marketing Firm

P. C. Havens
John Havens
Bobby Patrick
Rivie Cary
Howard Patton
Tim Moran
Randy Johns
Eric Schuster
Jerry Bowlin
Layne Williams

DALLAS DENVER HOUSTON MIDLAND NEW ORLEANS OKLAHOMA CITY CORPUS CHRISTI TULSA
201 St Charles Avenue, Suite 4300, New Orleans, Louisiana 70170-4300 504-581-7153 FAX 504-581-9591

**Pushing the Leading Edge
of Geophysics
through Technological
Innovation**

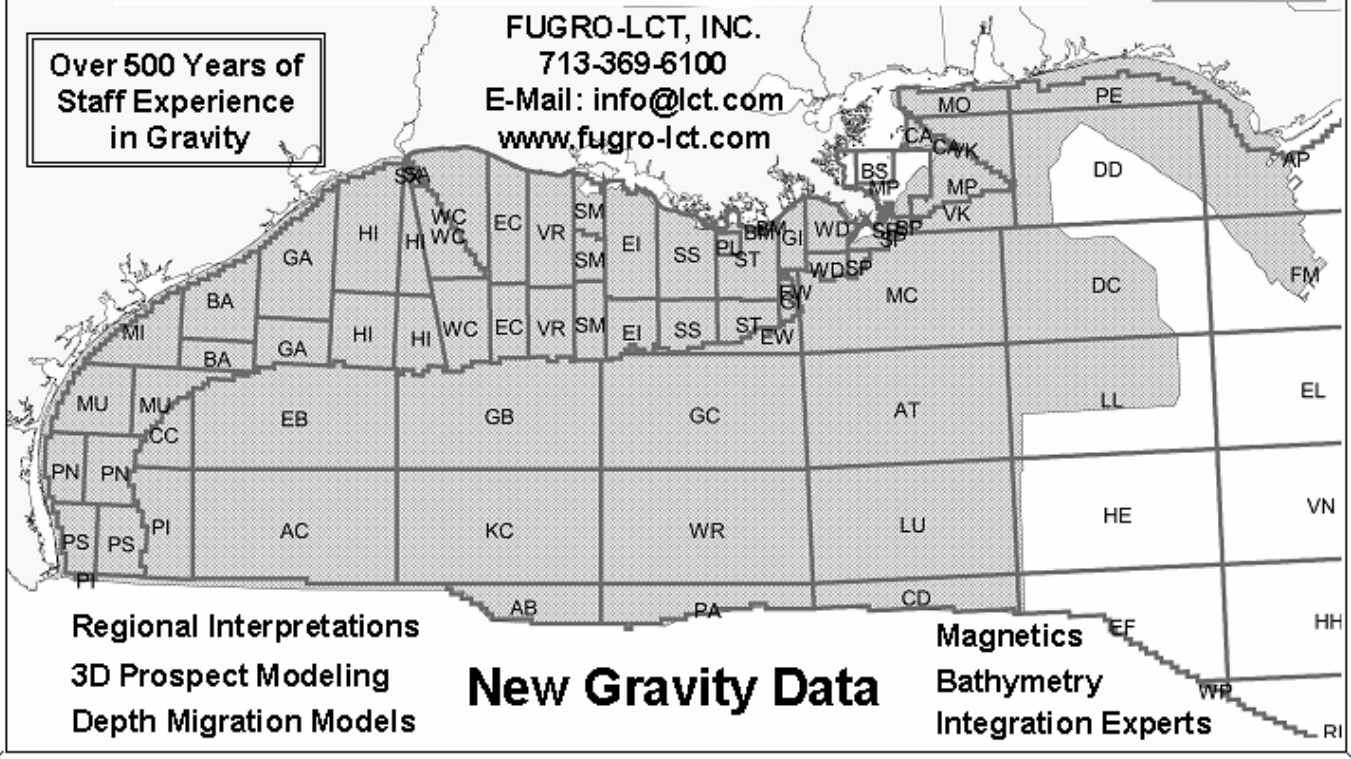


You Need More Than Seismic To Work The Deepwater Gulf of Mexico



Over 500 Years of
Staff Experience
in Gravity

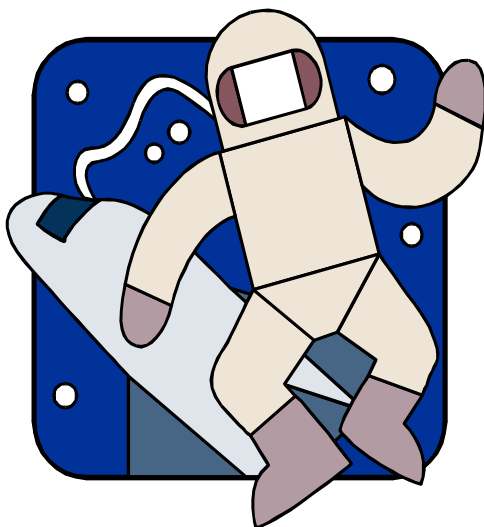
FUGRO-LCT, INC.
713-369-6100
E-Mail: info@lct.com
www.fugro-lct.com



Regional Interpretations
3D Prospect Modeling
Depth Migration Models

New Gravity Data

Magnetics
Bathymetry
Integration Experts



I dreamed I walked in space
in my SGS t-shirt.
GET YOURS TODAY

Show your support for your local geophysical society!

Buy a SGS Logo T-Shirt!

Now available at SGS Luncheons & Social Events for only \$12.00 each!

Available sizes: Small, Medium, Large, X-Large, & XX-Large

T-Shirt Design: 100% Preshrunk White Cotton T-Shirt

On the front – Southeastern Geophysical Society
Printed in blue on the left chest

On the back – Enlarged SGS logo printed in red & blue

Also Available by Mail for \$15.00 Each!
(Price includes shipping & handling – please allow 3 weeks for delivery)

SGS T-Shirt Mail-in Order Form (Please print clearly)

Sale \$10.00 each

Number of T-Shirts being ordered: _____ @~~\$15.00~~each

Size(s) Needed: _____

Amount of Check Enclosed: \$ _____

Mail T-Shirts(s) to: _____

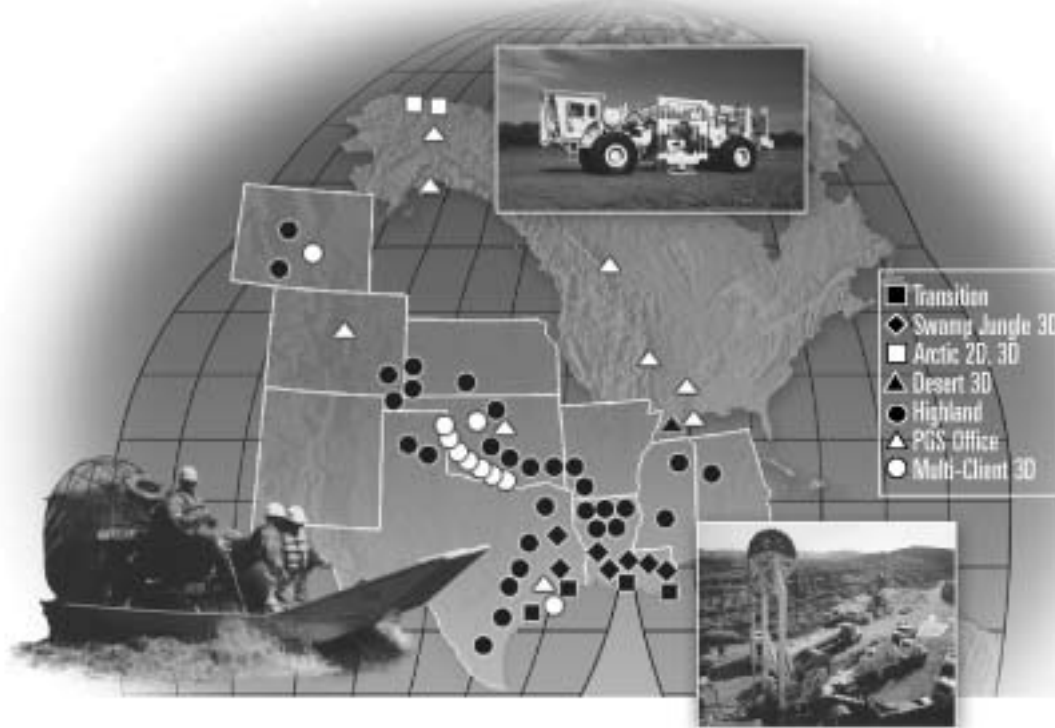
Mailing Address: _____

Telephone Number: _____

Please cut out this form, fill in the above information completely and mail it
with your check payable to:

Southeastern Geophysical Society
P.O. Box 57141
New Orleans, LA 70157

YOU WILL FIND US ALL OVER THE USA.



- Transition
- ◆ Swamp Jungle 3D
- Arctic 2D, 3D
- ▲ Desert 3D
- Highland
- ▲ PGS Office
- Multi-Client 3D

From Louisiana transition zone environments to the Oklahoma Wichita Mountains, Alaska to Texas, PGS Onshore is covering the USA with safe, highly efficient, best-in-class seismic crews. With the largest inventory of state-of-the-art recording instrumentation, PGS Onshore ensures that your highly experienced crew has world-class equipment to excel in any environment.

Are you challenged by imaging complex geology beneath difficult surface conditions? By deploying large channel

counts in customized HD3D™ designs, we deliver robust imaging solutions while minimizing environmental footprint – even in transition zones, swamps, ecologically sensitive areas, mountaintops or Arctic tundra.

What does this mean for you? World-class results. Best-in-class performance. Total commitment from PGS Onshore's experienced field crews, world class field support groups and worldwide management teams.

Record-setting performance, highest quality and minimal environmental footprint in any environment – shallow water, transition zone, desert, jungle, mountaintop, highland or Arctic – all over the world.

PGS GEOPHYSICAL-ONSHORE

If you are interested in finding out more about our onshore acquisitions and multi-client service, please contact any member of our team.

James Bogardus
281-679-2209

Gehrig Schultz
281-679-2225

Joe Rosas
281-896-1516

Marty Hall
720-651-6152

Wayne Millice
281-752-2487



*The 17 Oil and Gas Associations operating in the
Greater New Orleans area invite you to the*

**4th Annual Greater New Orleans
Joint Energy Industry Association Luncheon**

Fairmont Hotel
Tuesday, November 11, 2003
Refreshments/Networking begins at 11:00 a.m.

Vince F. Cottone
Chairman, Gulf Safety Committee
ChevronTexaco
MARITIME SAFETY ISSUES

In November 2002, President Bush signed into law the Maritime Transportation Security Act of 2002 (MTSA 2002). It requires development of regulations for security assessments, security plans, and specific security measures for ports, vessels, and facilities in waters subject to the jurisdiction of the United States.

Mr. Cottone will discuss these impending requirements to prepare and submit plans. Current schedule has the Coast Guard issuing its Final Rule on Maritime Security in late November 2003.

\$25.00 per person
RSVP: Richard Tucker at (505) 858-7872 or email
tuckquin@bellsouth.net



Southeastern Geophysical Society Membership Application

Fiscal Year
June 1, 2003 - May 31, 2004

Member Information

- New Member
- Renewing Member

The SGS is considering publishing an annual directory in a "Members only" portion of our website. Please check the applicable box below.

- Business
- Home
- Both
- Do not List

NAME _____
Last First M.I.

Professional Memberships:

SEG Status? Active Associate Student Not a member

Others: _____

Undergraduate/Graduate Schools: BA/BS: _____

MA/MS: _____ Other: _____

Check here if you prefer to receive your newsletter electronically & specify which email below.

Business Address check here if this is your preferred mailing address

Company _____

Address _____

Phone _____ Fax _____

E-Mail _____

Home Address check here if this is your preferred mailing address

Address _____

Phone _____ Fax _____

E-Mail _____

Spouse's Name _____

Dues are \$20 for Active and Associate Members and \$10 for students. Please make checks payable to SGS and mail to:

Secretary
P.O. Box 57141
New Orleans, LA 70157-7141

Cash _____

Check No. _____

Date Paid _____

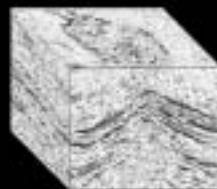
FROM A SMALL SAND CHANNEL
TO A LARGE BASIN,
WE CAN IMAGE
ALMOST ANYTHING

SEE FOR YOURSELF!

From man-portable positioning systems to the world's most advanced 3D seismic vessels, we have unique technology for seismic operations in all environments and the expertise to select the right tools to solve your imaging challenges.

Whether frontier evaluation, optimization of existing production or imaging of subtle traps, you can rely on our experience to deliver the maximum value from your data.


www.schlumberger.com



A multicomponent 3D survey over the North Sea Lomond field has successfully imaged details previously obscured by a gas chimney.

Schlumberger

HIGH RESOLUTION AEROMAGNETIC DATA




LOUISIANA SHELF

29,160 line miles of profile
on a 0.5 x 1.0 mile grid

A High Resolution Aeromagnetic (HRAM) Survey of the Louisiana Shelf is now in progress. This survey ties to our existing HRAM data and can be a valuable tool in your deep gas exploration play. Your participation is invited!

For more information contact: **Jeff Rowe**
Tel: 713-389-6123
jrowe@fugro.com
www.fugroairborne.com



FUGRO AIRBORNE SURVEYS FLYING WORLDWIDE



McMORAN
OIL & GAS

www.mcmoran.com
NYSE:MMR

1615 Poydras
New Orleans, LA 70112
(504) 582-4000
Fax: (504) 582-4155

P.O. Box 60004
New Orleans, LA 70160

Gulf of Mexico Shelf Business Unit
Gulf of Mexico Deepwater Business Unit

ChevronTexaco is proud to have been a pioneer in the Gulf of Mexico for over 50 years.

As the largest operator in the Gulf, we're working to build a secure, clean energy source for Louisiana and the United States with Deepwater projects such as Genesis, Gemini, Typhoon, Tahiti, and Petronius.



We're also working hard to improve the quality of life in the New Orleans area through our support of educational and environmental programs, the arts, and the United Way.

We're working for the future of New Orleans and the futures of our children.

ChevronTexaco

*Is the address on the label correct?
Have you moved offices or homes?
Changed your employer?
Changed phone numbers?*

Send Updates to:
Richard.Mongan@bakerhughes.com
Or
SGS SECRETARY
P.O. Box 57141
New Orleans, LA 70157-7141

MULTI-CLIENT



GC VI.....9000m streamer Kirchhoff PSTM

GC VII.....9000m streamer Kirchhoff PSTM

For more information, please contact:

Richard Fossier at (1) 985 624 3027 email: rfossier@cgg.com

Charles Bowen at (1) 281 646 2559 email: cbowen@cgg.com



Schlumberger



SEI®
Seismic Exchange, Inc.

DALLAS - DENVER - HOUSTON
NEW ORLEANS - OKLAHOMA CITY
MIDLAND - CORPUS CHRISTI - TULSA

Southeastern Geophysical Society

Fall Social and Membership Drive

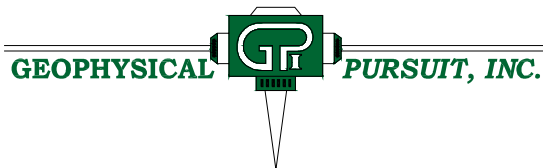
Thursday, October 23, 2003

11:00 am – 2:00 pm



**THANK YOU
TO OUR SPONSORS**

<http://sgs-neworleans.org>



Baker Atlas



P. O. Box 57141
New Orleans, LA 70157

Web address: www.sgs-neworleans.org

- TGS NOPEC – Page 4
- Geotrace – Page 6
- Dominion – Page 6
- Baker Hughes – Page 7
- Fairfield – Page 8
- Seismic Exchange Inc. – Page 9
- Shell – Page 9
- Fugro LCT – Page 10
- PGS Geophysical – Onshore – Page 11
- Schlumberger – Page 14
- Fugro Airborne Surveys – Page 15
- McMoRan – Page 15
- ChevronTexaco – Page 15
- CGG – Page 16

S.G.S. Executive Committee

SGS Officers

- PRESIDENT - Robert D. Shank**
ChevronTexaco..... (504) 592-6652
shnk@chevrontexaco.com
- 1st VICE PRESIDENT – Steve C. Tsai**
Shell Expl. & Prod. Co (504) 728-4489
steve.tsai@shell.com
- 2nd VICE PRESIDENT – Lisa Buckner**
Shell Expl. & Prod. Co..... (504) 728-6801
lisa.buckner@shell.com
- SECRETARY – Richard A. Mongan**
Baker Atlas..... (504) 561-7915
richard.mongan@bakeratlas.com
- TREASURER – Jacob W. Brown**
WesternGeco..... (504) 592-5104
jbrown9@new-orleans.westerngeco.slb.com
- EDITOR – Ellen Clark/Tom Van Wagoner**
ChevronTexaco..... (504) 592-6384
clarkef@chevrontexaco.com
- PAST PRESIDENT – Catherine Thibault**
ChevronTexaco..... (504) 592-6845
thic@chevrontexaco.com
- PRIOR PAST PRESIDENT – Larry B. Franceware**
Shell Expl. & Prod. Co..... (504) 728-4425
frware@shellus.com

SGA Officers

- President- Claire La Pointe..... (504) 835-2888
- Vice President – Rosemary Austin..... (504) 737-9697
- Secretary – Carol Kreider..... (504) 837-3998
- Treasurer- Claire La Pointe..... (504) 835-2888

- Richard Mongan – Baker Atlas..... (504) 561-7915
- Charles Bowen – CGG.....(281) 646-2595
- Karen Major – ChevronTexaco..... (504) 592-6893
- Shirley Higgins – ChevronTexaco..... (504) 592-6407
- Marsha Starr – Diamond Geop..... (281) 589-6725
- Jesse Yoste – Dominion.....(504) 593-7382
- Jim Harley – Eagle Geophysical..... (281) 342-1198
- Sherwin Eskew – Energy Partners..... (504) 799-4811
- Jeff Rowe – Fugro Airborne Surveys..... (713) 369-6121
- Brian Anderson – Fugro-LCT..... (713) 369-6100
- Sarah Murphy – Fugro-LCT.....(713) 369-6061
- Larry Galloway – GPS..... (985) 727-6720
- Karen Sontag – GXT.....(713) 789-7250
- Robert Brewer – Halliburton..... (281) 988-2146
- Maureen Nickle – Kelman Tech..... (281) 293-0537
- Laurie Anderson – LSU.....(225) 578-2153
- Juan M. Lorenzo – LSU.....(225) 578-4249
- Jeff Nunn - LSU
- James Hicks – MMS.....(504) 736-2643
- David Wade – Murphy E&P.....(504) 561-2324
- Larry Asher – PGS..... (281) 589-8829
- David Gillis – Schlumberger..... (504) 592-5360
- Layne Williams – SEI.....(504) 581-7153
- Sarah Stanley – Seismic MicroTech..... (713) 464-6188
- Jim McGinnis – Seitel Data.....(504) 582-2290
- Rupert Cole – Shell..... (504) 728-7678
- Derek Farris – Siemens..... (504) 728-0156
- Jim McCarty – Taylor Energy..... (504) 589-0577
- Chris Corona – TGS NOPEC..... (713) 860-2115
- Juliette Ioup – UNO.....(504) 280-6715
- Jerry Young – Veritas DGC.....(832) 351-8695
- Brian Broussard – WesternGeco..... (504) 585-5489